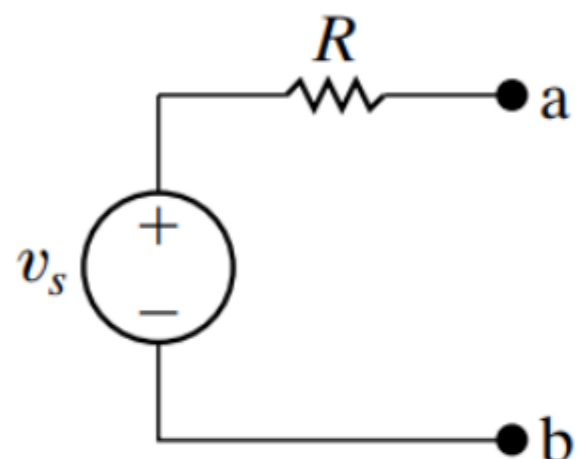


Source Transformation

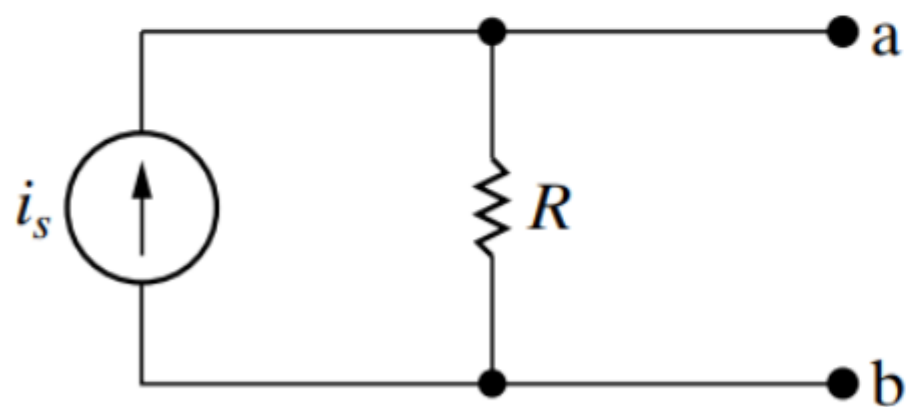
Giannacco

A source transformation allows a voltage source in series with a resistor to be replaced by a current source in parallel with the same resistor or vice versa.

General Case



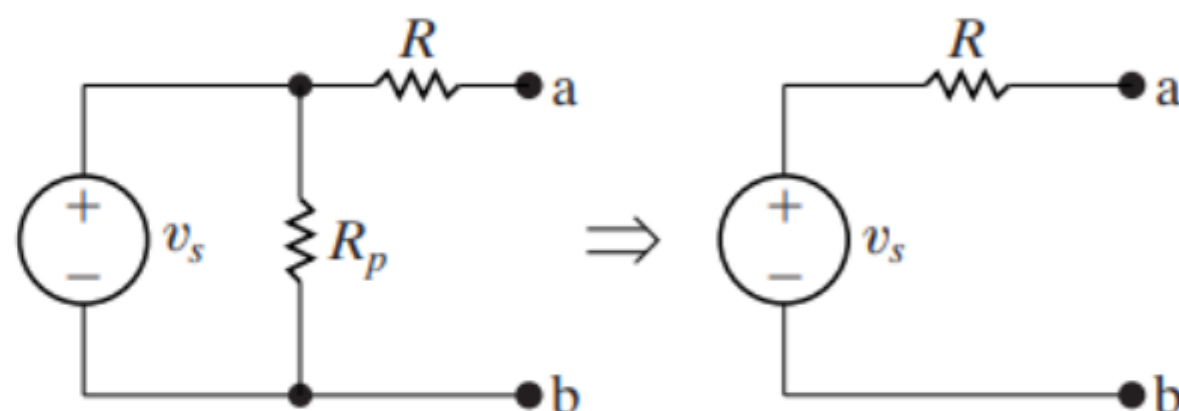
(a)



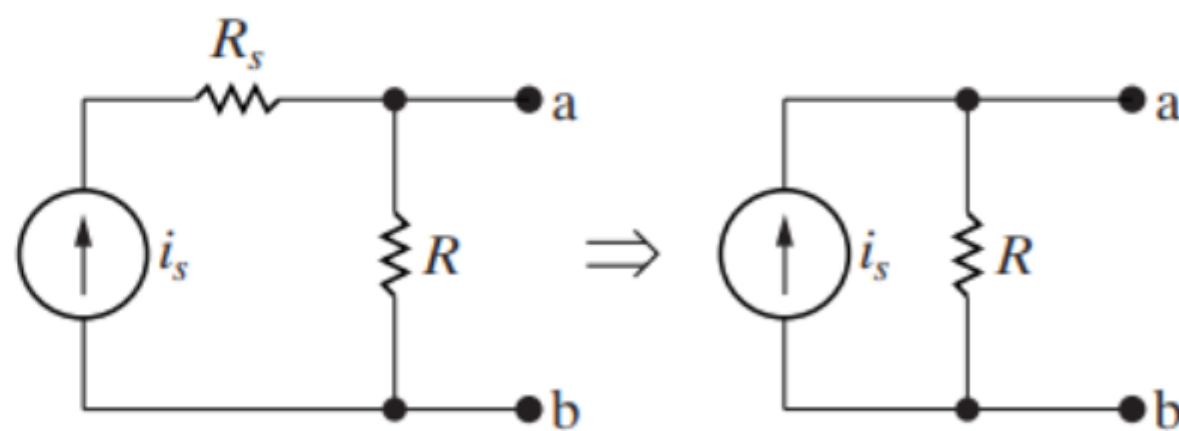
(b)

$$\frac{v_s}{i_s} = R_{(a)} = R_{(b)}$$

Special Cases



(a)



(b)

$$\frac{v_s}{i_s} = R_{left} = R_{right}$$